



MICHIGAN DAIRY MEMORIAL AND SCHOLARSHIP FOUNDATION

ANNUAL NEWSLETTER • ISSUE 21
NOVEMBER 2024



MDMSF Scholarships Fund: At A Glance

Thanks to the generous support of donors, the Michigan Dairy Memorial and Scholarship Foundation (MDMSF) at Michigan State University (MSU) is proud to highlight an impressive list of scholarships:

- \$3,000 to first-year students
- \$3,500 to sophomores, juniors and seniors
- **Glenn and Anne Lake Scholarship** – \$8,500
- **Russel Erickson Scholarship** – \$6,000
- **Donald and Valera Murray Scholarship** – \$5,000
- **Harold and Lillian Gremel Scholarship** – \$5,000 for a student in veterinary school
- **Red and Edna Cotter Purina Memorial Scholarship** – \$5,000 for a student in veterinary school (preference to those with international interest)
- **John and Barbara Dilland Scholarships** – \$5,000 for students majoring in Agribusiness Management
- **Jack and Betty Barnes International Scholarship** – scholarships for international experiences

- **Archie Studer Scholarship** – \$5,000 for a student with interest in dairy breeding or production
- **Nick Bellows Scholarship** – \$5,000 for a student with interest in dairy promotion
- **Velmar Green Scholarship** – \$5,000 for a second-year student in the Dairy Management Program of the Institute of Agricultural Technology
- **George and Shirley Hazle Scholarship** - \$5,000 for a student with a strong 4-H background
- **Gary and Carolyn Trimner Scholarship** - \$5,000 for the MMPA Food Systems Fellowship intern or a veterinary student pursuing a career in bovine medicine
- **Dan First Scholarship** - \$5,000 for a student with demonstrated community involvement and a passion for innovation in the dairy industry

Funding for the MDMSF scholarships comes from generous donations from individuals, firms and corporations wishing to honor those members of the dairy industry who have performed distinguished services for Michigan's dairy industry.

Michigan Dairy Memorial and Scholarship Foundation Board of Directors

President

Matthew Wood, at-large

Vice-president

Tom Nugent, at-large

Secretary

Dr. Miriam Weber Nielsen, MSU
Dept of Animal Science

Sheila Burkhardt, at-large

Jeff Bushey, at-large

Scott Corrin, Dairy Farmers of America

John Dilland, at-large

Phil Durst, at-large

Dr. Mark Fox, at-large

Eric Frahm, Michigan Milk Producers Association

Velmar Green, at-large

Bryan Hull, Dairy Farmers of America

Jess Jakubik, CentralStar Cooperative

Dana Sue Kirk, at-large

Carl Kohlhoff, at-large

Dwight Nash, Dairy Farmers of America

Gary Nelsen, at-large

Carl Rasch, Michigan Milk Producers Association

Gene Sickels, at-large

Bridget Silvernail, at-large

Ben Spitzley, at-large

Brian Troyer at-large

Zey Ustunol, MSU Dept of Food Science and Human Nutrition

Jason Wadaga, Michigan Dairy Foods Association

Mark Ziel, CentralStar Cooperative



PRESIDENT'S MESSAGE

Matthew Wood

Dear family members of Michigan's great dairy industry,

It is my distinct honor to serve as the MDMSF Board of Directors President and to bring you the message that our foundation is doing amazing work! We are here to honor our past, serve the present and assist the future of Michigan's strong dairy industry.

Over the years, our board has worked very hard to understand the ever-changing needs of our dairy industry and the educational needs of the students who will take it into the future. Making significant investments in students through scholarships continues to be this foundation's primary focus. Last year we continued that mission with a record amount of scholarship funds awarded.

Additionally, this foundation made significant investments in critical student programs approved by the Board of Directors. I am extremely proud of our financial support for Dairy Challenge teams, Dairy Judging teams and Dairy Products teams. Additionally, we have been able to contribute to the new Dairy Academy which was developed to bring new students into the university dairy programs. We have also financially supported two students enrolled in MSU's partner programs at community colleges in Michigan in their agricultural program initiatives.

These scholarships and program support are made possible by all of you, our donors and contributors! Thank you for all your support of the Michigan Dairy Memorial and Scholarship Foundation, both past and present. Our longstanding history of support for Michigan's dairy industry and its future leaders will continue because of you.

Sincerely,

Matthew Wood
President, Board of Directors
Michigan Dairy Memorial and Scholarship Foundation

Ken Nobis

Ken Nobis has served the dairy industry in a wide range of state and national leadership positions, making a significant impact in Michigan and across the country. Ken was first elected to the Michigan Milk Producers Association (MMPA) board of directors in 1992, serving as vice-president of the association for seven years. He was subsequently elected president in March 2007 and served in that capacity until 2019. Ken also served on the board of directors for the United Dairy Industry of Michigan and the Michigan Livestock Expo.

On the national level, he served as the first vice chairman and on the executive committee for the National Milk Producers Federation (NMPF) board of directors. He was chairperson of the NMPF Sustainability Committee, a member of the Dairy Management, Inc. board of directors and the U.S. Dairy Export Council board of directors. He was recognized with the Honorary Director for Life award by the NMPF in 2021.

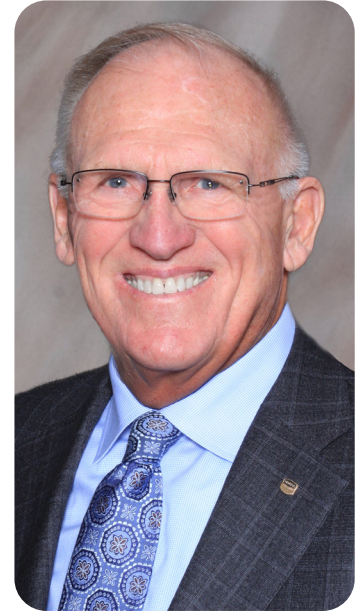
In addition to his service to the industry, Ken remains an integral part of his family dairy farm. He has been farming in the St. Johns area since completing his college education at Western University and a two-year term in the Army. He operates a 1,000-cow dairy farm and farms 3,000 acres with his brother, Larry. The Nobis Dairy Farm is viewed as one of the top herds in the state and is often utilized by Michigan State University (MSU) for research trials and as a teaching and research facility for MSU professors, students and Extension educators.

In 2006, the MSU Department of Animal Science named Ken and Larry the Dairy Farmers of the Year. In 2015, Nobis Dairy Farms received national recognition with the Outstanding Dairy Farm Sustainability Award by the Innovation Center for U.S. Dairy. In 2017, Ken was the recipient of the Honorary Alumnus Award from the MSU College of Agriculture and Natural Resources Alumni Association and received the Honorary Alumni Award from MSU in 2019. He also served as the guest speaker for the Annual H. Allen and Ann Tucker Endowed Lectureship at MSU in 2017.

Ken played a key role in establishing MMPA's partnership with the Food Bank Council of Michigan, which began in 2015 and was strengthened by a milk donation to Flint Water Crisis families in 2016, in collaboration with Kroger Michigan Dairy. In 2020, Ken was appointed by Governor Whitmer to the Michigan Food Security Council formed to help address food insecurity in Michigan. In 2022, Ken was named a farmer ambassador by the Farm Journal Foundation which engages farmers and producers from across the country as advocates for investment in modern agricultural developments to ensure access to food and nutritional security internationally.

Ken and his wife Liz have two sons, Kerry and Mitch.

MMPA is pleased to recognize Ken Nobis as an honoree of the Michigan Dairy Memorial and Scholarship Foundation for his tireless efforts as an advocate for the dairy industry and his many years of commitment and influential leadership to the state and national dairy industry.



Established endowment honors memory of Daniel First

The First Family established the Daniel First Memorial Scholarship to honor the memory of Daniel First, a lifelong Spartan and dairy farmer. They hope this scholarship will further Dan's memory and positively impact the dairy industry he cared for so deeply.

Dan First was born in Ionia and grew up on the family dairy farm. In his youth, he was active in 4-H and FFA, showing his value for community and leadership. He purchased his first 80 acres when he was 20 years old. The crops he grew paid for his education at MSU, where he majored in Ag Education. Dan was an active member of the FarmHouse fraternity while at MSU and made many lifelong friendships.

After graduation in 1981, he worked as a loan officer for the Production Credit Association while continuing to work on the farm. He returned to the home farm full-time in 1986 in a partnership with his father. He bought the farm outright in 1990, installed a new parlor in 1994, and sold it to his son in 2011. During his ownership, he acquired additional farmland and grew the herd.

Dan was a leader in genetics and milk production, participated in research trials and believed in lifelong education in his field. He instilled this value in his children. Dan often listened to the farm report at lunch and always had his briefcase of Hoard's Dairyman and other publications with him, even on vacation. He loved to ride his bike around the farm and drink Mountain Dew in a frosted mug. Dan was unafraid to try new things to benefit the farm and improve the herd. He also cared deeply about improving his community. He was on the Township Board for many years and was instrumental in bringing zoning to the township, intending to protect farmland.

Dan was a fourth-generation dairy farmer. He was committed to a lifestyle of hard work, personal achievements and determination and mentored many youth interested in agriculture. Dan suffered a brain aneurysm 17 years before his passing and defied all odds by applying the same qualities he utilized as a farmer to regain his health. Through this endowment, the family intends to support the education of future innovators in the dairy industry who are similarly committed to community involvement.

Dan and Margie have two children, Lindsey and Josh, and four grandchildren, Austin, Brant, Raegan and Dawson.

The Foundation deeply appreciates the generosity of the First family in providing this new scholarship to students with a dairy interest.





New endowment recognizes Gasper's excellence in industry

Ken and Jane Gasper established the Gasper Dairy Memorial Student Experience Fund to strengthen the future of the Michigan dairy industry that their family has served for many years. Their goal is for this fund to support the practical education of students interested in careers in the dairy industry.

Ken Gasper was born in Grand Rapids and attended Belding High School. While attending the Agricultural Technology program at MSU, he worked as a sub-milk hauler. After graduation, he worked for Michigan Animal Breeders Cooperative as a technician. He then returned to the home farm, Lew-Max Holsteins, in Belding, to manage the 60-cow registered Holstein herd with his father, Lewis Gasper. In 1972, Ken married Jane Majinska. After their marriage, Jane took on the duties of farm bookkeeper, canning expert and raising their four children, Nikki, Aaron, Maddie and Jamie.

In 1988, Ken, Jane and their four children ran the operation with Lewis Gasper remaining as financial consultant. In 2001, Aaron Gasper became the fifth-generation partner for Lew-Max Holsteins, LLC. Following Ken's retirement, the operation presently consists of 700 cows along with 1,000 acres of crop land. Among many recognitions received for excellence in genetics and herd management, Ken received the "Dairy Farmer of the Year" in 1992 from

the MSU Department of Animal Science and the Pioneer Award in 2020 from CentralStar Cooperative.

The Gaspers have been active in their local and broader community. Their numerous involvements include the St. Joseph's School Board and Township Planning Committee. In agriculture, Ken served the industry in many capacities, often in leadership roles, with Select Sires, CentralStar Cooperative, 4-H Dairy Club Leader, Ionia County Farm Bureau, Michigan Farm Bureau State Policy Development Committee, Michigan Milk Producers Association, Belding FFA Advisory Council, the Michigan Dairy Memorial and Scholarship Foundation and the MSU Animal Science Advisory Committee.

Ken and Jane's family has grown to include 14 grandchildren.

The Michigan Dairy Memorial and Scholarship Foundation expresses sincere gratitude to the Gaspers for generously providing this new opportunity to MSU students with a dairy interest.

MDMSF scholarship recipients



L-R BACK:

Cole Vander Dussen
Riley Baker

L-R MIDDLE:

Brianna Hill
Grant Gasper
Rhianna Bruursema
Grace Brown
Sadie Brearley
Bette Eggink
Elizabeth Hyman
Clea Moore
Mason Fielding
Samantha Whitehead
Danielle Rummel

L-R FRONT:

Adalee Thelen
Rachael Bosse
Callie Loew
Irie Moussiaux
Jaylin Dilsaver
Lauren Ringewold
Erica Holup
Julia Baker
Ella Cloud-Schneider
Deandra Franklin

Named Scholarships

Drew Neyer,

a senior in Animal Science from Shepherd, received the Glenn and Anne Lake Dairy Memorial Scholarship. During his undergraduate program, Drew worked on several dairy farms, including as a student manager on the MSU Dairy Farm. Drew also participated in the Dairy Club, Dairy Challenge and National 4-H Congress. Following graduation, Drew plans to pursue a management position on a large dairy farm.



Katie Wilson,

a senior in Animal Science from Blanchard, received the Russel Erickson Dairy Memorial Scholarship. After graduation, she plans to work in management on a large dairy farm. While at MSU, she has participated in the Dairy Club, Dairy Challenge, dairy judging and as a 4-H youth advisor. She also completed internships at the Miner Institute in New York and with a Michigan dairy farm.



Brianna Hill,

a junior in Animal Science from Gregory, received the Donald and Valera Murray Dairy Memorial Scholarship. Brianna works as a research assistant in dairy nutrition and participates in the MSU Dairy Club, Collegiate Farm Bureau and dairy cattle judging. She has interned on a large dairy farm and in dairy genetics during her program so far.



Lauren Ringewold,

a junior in Animal Science from Battle Creek, received the John and Barbara Dilland Dairy Memorial Scholarship. Lauren earned her state FFA degree and has worked on dairy and beef farms. She participates in the MSU Dairy Club and Dairy Challenge and plans to work in dairy nutrition or genetics.



Rachael Bosse,

an Animal Science senior from Moline, received the John and Barbara Dilland Dairy Memorial Scholarship. She has worked on several farms and interned in dairy nutrition as she prepares for a career in dairy nutrition consulting. In addition, she participated in the Dairy Club, Dairy Challenge, dairy judging and SALT Company while at MSU.



Irie Moussiaux,

a senior in Animal Science from Bruce Township, received the Archie Studer scholarship. She works in a dairy nutrition research program and completed an internship in dairy nutrition and on dairy farms. Irie participates in the MSU Dairy Club, Sigma Alpha, Dairy Challenge and dairy judging. After graduation, she plans to pursue graduate work at the Ohio State University.



Jaylin Dilsaver,

a junior in Animal Science, is the recipient of the Nick Bellows Scholarship. She earned her state FFA degree and participates in the MSU Dairy Club. She has worked on several dairy farms before and during her time at MSU. After graduation, Jaylin plans to work in dairy nutrition and operate a heifer-raising facility.



Adalee Thelen,

a junior in Animal Science from St. Johns, is the recipient of the George and Shirley Hazle Dairy Memorial Scholarship. She participates in the MSU Dairy Club, as president of the Michigan Junior Holstein Association and in dairy judging. Following her work experiences in dairy genetics, on dairy farms and with a dairy equipment company, she plans to pursue a career in dairy consulting.



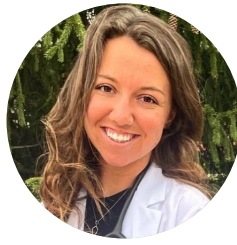
Curtis Patton,

a fourth-year Veterinary Medicine student from Spraggs, Pennsylvania, is the recipient of the Red and Edna Cotter Scholarship. While raising and selling calves to youth exhibitors in his spare time, Patton earned a master's degree in animal science and has worked at several veterinary clinics. He serves as club treasurer and palpation team coordinator for the Theriogenology Club and plans to provide embryo transfer services in his future career as a dairy veterinarian.



Morgan Mathews,

a third-year Veterinary Medicine student from Glencoe, Minnesota, is the recipient of the Harold and Lillian Gremel Scholarship. She has worked on dairy farms and in veterinary clinics and serves as secretary of her class. In her spare time, Morgan is active in collegiate sports and coaching. She plans to work as a production medicine veterinarian in the Midwest.

**Cecelia Brandt,**

a second-year Veterinary Medicine student from Cedar Springs, is the recipient of the Gary and Carolyn Trimner Scholarship. Brandt worked on a dairy farm before starting veterinary school and completed the Food Systems Fellowship with the Michigan Milk Producers Association.

**Rhianna Bruursema,**

a second-year student in the MSU Institute of Agricultural Technology in Dairy Management from West Olive, is the recipient of the Velmar Green Scholarship. Rhianna has worked on a dairy farm and a veterinary clinic as she prepares for a career involving dairy nutrition. Rhianna participates in the MSU Dairy and Block and Bridle Clubs.

**Returning Student Scholarships****James Link,**

an Animal Science sophomore from Alto, worked on his family's dairy farm and participated in 4-H and wrestling during high school. He plans to work on his family farm after graduation.

**Ella Cloud-Schneider,**

an Animal Science sophomore from Midland, participates in the Dairy and Agriculture Education Clubs at MSU. She works as a lifeguard, in retail and on a dairy farm. After graduation, she plans to work in agribusiness.

**Deandra Franklin,**

an Animal Science senior from Brownstown, has worked at the MSU Dairy Farm and on dairy nutrition research. She interned on a dairy farm and in a dairy technology support position. She plans to work in the dairy industry following graduation.

**Jewel McMaster,**

an Animal Science senior from Leonidas, has worked on dairy and livestock farms and veterinary clinics during her program. After completing an internship on a large dairy farm, she plans to pursue a veterinary-related career.

**Samantha Whitehead,**

a senior in Animal Science from Corunna, plans to work in dairy industry communications following graduation. She served as President of the MSU Dairy Club and as a Michigan dairy ambassador. She worked on a dairy farm during college and now works with the United Dairy Industry of Michigan in industry relations.

**Lane Herrman,**

a senior in Animal Science from Buchanan, participates in the MSU FarmHouse Fraternity, Dairy Club and Block and Bridle Club, in addition to working on dairy farms and in construction. He plans to work in dairy nutrition, health or genetics following graduation.

**Clea Moore,**

an Animal Science junior from Fowler, has worked on dairy farms during her degree and participates in the Driving Club and Pre-Veterinary Medical Association at MSU. She is pursuing a career in veterinary medicine with a focus on dairy cattle.



Danielle Rummel,

an Animal Science junior from Frankenmuth, has worked on dairy farms and in a veterinary clinic during her program at MSU. During the spring, she serves as a varsity girls' soccer coach. Danielle plans to work in the dairy industry after graduation.



Riley Baker,

an Animal Science junior from Coldwater, has worked on dairy and swine farms during college. He participates in the MSU FarmHouse Fraternity and plans to work in dairy genetics following graduation.



Katrina Beaton,

a second-year Veterinary Medicine student from Traverse City, worked on dairy farms and at veterinary clinics during college. Following graduation, she plans to become a food animal veterinarian to make a difference in her community.



First-year Scholarships

Brianna Armbruster,

a first-year student in Animal Science from Elkton, has worked at a dairy farm and a veterinary clinic. She is also active in the MSU Block and Bridle and Dairy Clubs. After graduation, Brianna plans to pursue a position as a state dairy inspector.



Erica Holup,

a first-year student in Animal Science from Ottawa Lake, participates in the Dairy Club and works in a swine research program at MSU. In her spare time, she owns a photography business.



Julia Baker,

a first-year student in Animal Science from Roswell, Georgia, participates in the Dairy and Block and Bridle Clubs while also working at the MSU Dairy Farm. She is exploring careers in extension and education.



Sadie Brearley,

a first-year student in Animal Science from Portland, participates in the MSU Dairy and Block and Bridle Clubs while continuing to work at her family farm. She plans to work in dairy production or consulting after graduation.



Grace Brown,

a first-year student in Animal Science from Reese, has worked on dairy farms and participated in 4-H and FFA dairy judging. She plans to work in dairy production after graduation.



Isabella Stoutenburg,

a first-year student in Animal Science, hails from Sandusky. While pursuing a career as a large animal veterinarian, Isabella continues to work on her family farm and raise livestock projects for the fair.



Grant Gasper is a first-year student from Lowell in the MSU Institute of Agricultural Technology in Dairy Management. Grant, who has worked on dairy farms while earning certifications in welding and construction, plans to work on a dairy farm after graduation.



Hailey Greimel,

a first-year student from Charlevoix, is majoring in Food Science. Hailey participates in the Food Science Club, the Food Science Quiz Bowl Team and the Product Development Team and has worked at MSU's Food Processing Innovation Center. After graduation, she plans to pursue graduate work in food science and technology with an emphasis in food law.



Brielle Herner,

from Bentley, is a first-year student completing the Agricultural Operations program at Delta College before transferring to MSU. She is working in crop sales and plans to work in agribusiness with a dairy focus after graduation.



Amy Kern

is a first-year student completing the Agricultural Operations program at Delta College prior to transferring to MSU. In addition to working on her family farm, Amy works in a veterinary clinic, trains leader dogs and serves as a coach at sports camps. Amy is considering veterinary medicine as well as other career opportunities in dairy.



Meta Keyes

is a first-year student from Montrose in the MSU Institute of Agricultural Technology in Dairy Management. Meta has worked at a swine farm and in agricultural retail and plans to work in dairy production after graduation.



Callie Loew

is a first-year student from Montrose majoring in Animal Science. In addition to working on her home farm, Callie completed a dental internship. Callie plans to work in the dairy industry after graduation.



Bette Eggink

is a first-year student from Deckerville in the MSU Institute of Agricultural Technology in Dairy Management. Bette works on her home farm along with participating in FFA. After completing her bachelor's degree, she plans to work in dairy nutrition consulting.



Cole Vander Dussen

is a first-year student from Richland in the MSU Institute of Agricultural Technology in Dairy Management. During high school, he worked for a custom farming business in California and participated in cross country. After graduation, Cole plans to work in dairy production or nutrition consulting.



ELIMINATE ESTATE TAXES THROUGH CHARITABLE GIFTS

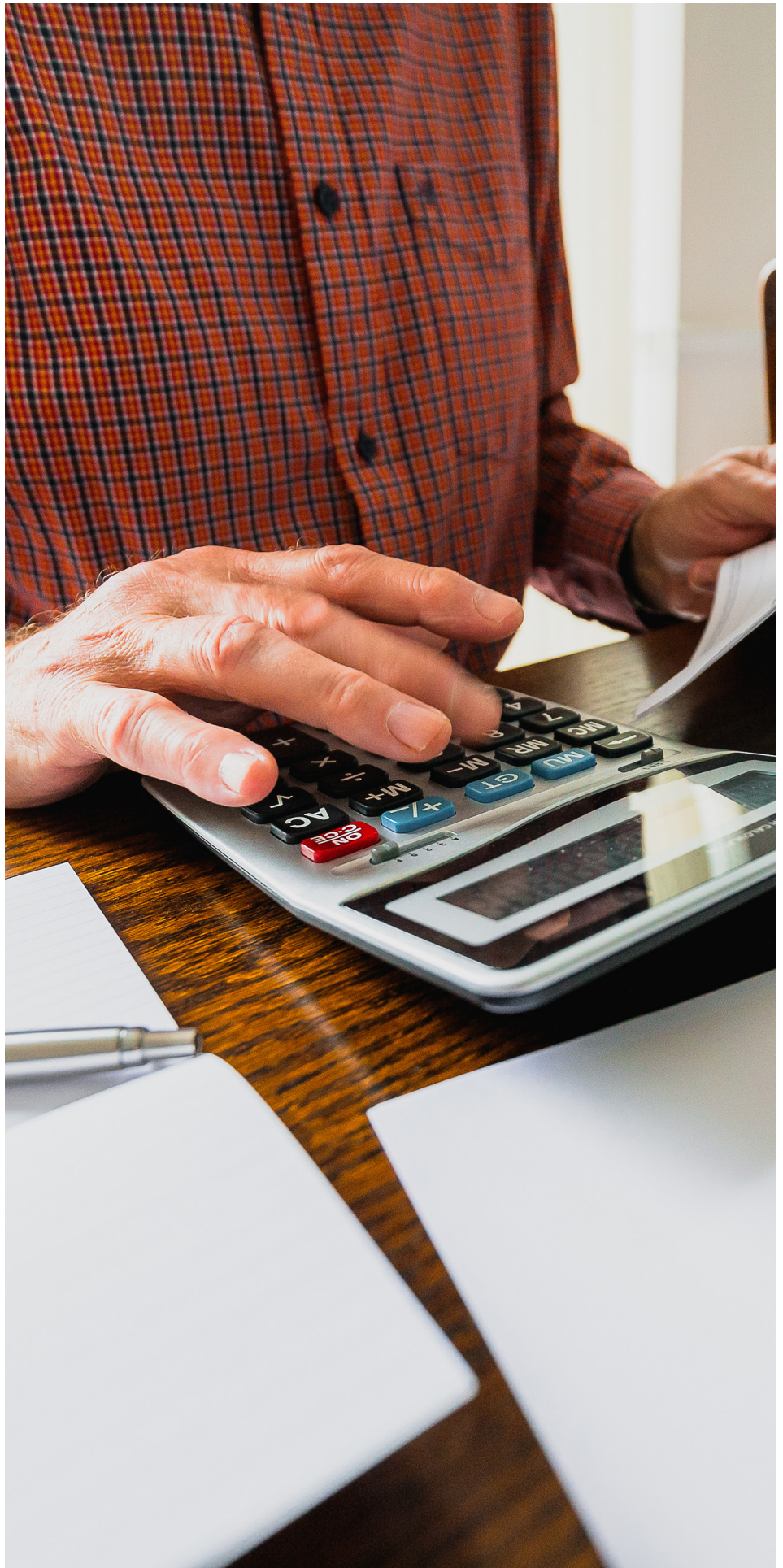
By Jeffrey Bushey, *Managing Principal, Nietzke & Faupel, P.C.*

The 2018 Tax Cuts & Jobs Act doubled the estate tax exemption. For 2024, the exemption amounts to \$13.61 million. This is indexed for inflation each year and is projected to be approximately \$14 million in 2025. However, like many provisions in the 2018 Tax Cuts & Jobs Act, the provision for doubling the estate tax limit will expire. In 2026, the exemption is projected to be approximately \$7 million.

With the recent increase in farmland values, many farmers and landowners may exceed this limit. The estate tax law requires everyone's estate to be valued at the date of the decedent's death. This requires values to be determined for all assets owned and then a subtraction for any liabilities owed at the date of death. The resulting amount is the estate tax value. Any estates exceeding the estate tax exemption must file an estate tax return and pay approximately 40 percent tax on any amount exceeding the exemption.

Most estates exceeding the exemption have two options for avoiding the estate tax using charitable gifts. One way to avoid estate taxes is to simply donate any amount above the exemption to a charitable organization. In most cases, this will save on income taxes each year, and since the funds are no longer in the estate this will save on estate taxes as well. Many wealthy individuals use this tactic to completely avoid estate taxes. It was recently reported that Warren Buffett has updated his estate plan to include donating most of his billions to charitable foundations he has set up.

The second option for avoiding the estate tax is to provide language in your estate documents (trust or will) directing the trustee or executor to make certain charitable donations from your estate. Be sure to consult your tax professional before making any of these decisions.



UPDATE ON NEW MSU DAIRY FACILITY

Barry Bradford, Professor and C. E. Meadows Endowed Chair in Dairy Management and Nutrition

The new MSU Dairy Teaching and Research Center is officially under construction! Thanks to a \$30-million investment by the state, input from dozens of experts, including dairy producers, and leadership from MSU's internal construction management team, we broke ground in May 2024 with the goal of moving cows in by fall 2025. This state-of-the-art facility will include both robotic and conventional milking systems, stalls for up to 680 cows, a capacity for up to 144 cows to be fed individually with freestall housing, a visitor center and two classrooms.

We appreciate the support of the Michigan agriculture community and our alumni in communicating the need for this facility to the legislature in 2022. Now, we are seeking partners to help us close the gap on the cost of the facility so that it can fulfill its full potential to answer questions for the industry and educate future generations about dairy production.



For more information about ways to support the new MSU dairy facility, contact:

Jeffrey Martin (mart2767@msu.edu)
Senior Director of Development
College of Agriculture and Natural Resources



DISPATCHES FROM THE ANIMAL SCIENCE DEPARTMENT

Cathy Ernst, Animal Science Chairperson

The Animal Science Department has been very active in the past year, growing total enrollment in the four-year B.S. and two-year Ag Tech programs to nearly 700 students. Our Dairy Industry Concentration curriculum is entering its fourth year and has created a social media presence on Facebook and Instagram, highlighting student activities and successes. The number of students participating in the dairy concentration is currently 40 students. There have been 14 ANS Dairy Industry Concentration graduates since its inception.

The second MSU Dairy Education Academy, held in November 2023, allowed high school students to visit campus and learn about dairy education opportunities

at MSU. The first two academies hosted over 50 potential Spartans, and at least eight of the past academy participants enrolled in MSU, with more expected. A third Dairy Education Academy class will be coming to campus this fall.

The MSU Dairy Challenge team continued to perform well, placing second in a competitive division in a national competition in Visalia, California, in April. This marks the sixth National Dairy Challenge contest in a row where the MSU team placed first or second in their division. Members of the MSU Dairy Judging Team traveled to Richmond, Utah, to compete in the 2024 Richmond Black and White Days Judging Contest. The team placed third overall and third in reasons, with Elizabeth Hyman placing fifth individually in reasons.

Our faculty, graduate and undergraduate students have been active in participating in professional conferences and several students have received top placings in competitions. At the Tri-State Dairy Nutrition Conference in April, Alycia Burch (advisor Adam Lock) placed first in the Ph.D. division competition, and Maggie Miller (advisor Adam Lock) placed second in the MS division competition. In addition, undergraduates Brooke Seelenbinder (advisor Adam Lock) and Brianna Hill (advisor Barry Bradford) placed first and second respectively in the undergraduate division competition. MSU Animal Science was also well represented at the annual meeting of the American Dairy Science Association (ADSA). Barry Bradford, Adam Lock, Richard Pursley, Rob Tempelman and Mike VandeHaar gave symposium presentations, and many graduate students and postdocs presented their research.

Members of the MSU dairy group were also recognized with several prestigious awards and honors during the past year. Mike VandeHaar assumed the leadership role of ADSA President. Richard Pursley received the Zoetis Physiology Award from ADSA. Tasia Kendrick received the American Society of Animal Science Midwest Section Outstanding Young Teacher Award. Adam Lock received the CANR Established Mid-Career Researcher Award and Lynn Worden received the CANR Excellence in Research Performance and Support Award. In addition, graduate students Paiton McDonald and Haylee Reisinger, Ph.D. students working with Barry Bradford, were named Foundation for Food & Agriculture Research (FFAR) Fellows.

We can't express enough our tremendous gratitude for the support we receive from our alumni and friends. We were pleased to recognize Doug Westendorp of Westvale-View Dairy with the 2024 Dairy Farm of the Year award presented at the Great Lakes Regional Dairy Conference in February. We are also thankful for the many alumni, industry leaders and friends who advocated for state funding for infrastructure updates to the campus dairy and greenhouse facilities in 2022. The groundbreaking for the new dairy was held on April 11, 2024, and the site is actively under construction. This state-of-the-art facility will allow the training of students for dairy industry positions, as well as facilitate research directly relevant to industry needs.

Additional news reports and features on dairy research, Extension and student activities can be found in the Spartan Dairy Newsletter, which is published three times per year.

2023-24 DAIRY JUDGING REVIEW

The Michigan Collegiate, Ag Tech and 4-H Dairy Judging teams had a successful 2023-24 judging season. The Collegiate team members included Rachael Bosse, Brianna Hill, Drew Neyer and Adalee Thelen. The team placed in the top six in three national contests, including second overall at the All-American Dairy Show in Harrisburg, Pennsylvania. They were also in the top four for reasons in each contest. Ag Tech team members included Rhianna Bruursema, Chloe Endreszl, Abigail Olger and Elijah Swyers. The team competed in two national contests, placing ninth overall at the World Dairy Expo and fourth at the North American International Livestock Exposition.

In May, three MSU dairy concentration students traveled to Utah to compete in the Richmond Black and White Days Collegiate Dairy Judging contest. The team placed third overall and third in reasons. Team members included Brianna Armbruster, Elizabeth Hyman, and Clea Moore.

All students who competed were either ANS dairy concentration or Ag Tech dairy students. Thanks to the financial support of many organizations, including MDMSF, students could travel to over 30 dairy farms in five states and attend an extensive weekend practice at the Maryland State Fair.

For more information and contest results, please visit our website.

<https://www.canr.msu.edu/dairyjudging>

DAIRY CHALLENGE RECAP

In February, nine dairy concentration students traveled to Green Bay, Wisconsin, to participate in the Midwest Dairy Challenge. The trip included visits to Diedrich Farms, Libertyland Dairy and Tauchen Valley Inc., panel discussions and networking with students from other Midwest universities and dairy industry professionals. Aggregate teams of students from across universities competed against each other. MSU dairy concentration student Danielle Rummel and her team placed first in the Dairy B division, and Adalee Thelen and her aggregate team placed second in the Dairy C division.

In April, the 2024 MSU National Dairy Challenge Team placed second in a highly competitive division at the national contest held in Visalia, California. The team, coached by Dr. Roger Thomson and Dr. Joe Domecq, consisted of Adalee Thelen, Irie Moussiaux, Brianna Hill, and Danielle Rummel. Throughout the week, the team visited several dairies, networked with other students and industry professionals and traveled across California. A special thank you to Wickstrom Jersey Farms, Inc., Calori-D Holsteins, and Tollcrest Dairy for hosting the team practices in California.

The MSU Dairy Challenge program is supported by MDMSF and many other sponsors. This support allows students to travel across the country and is greatly appreciated.

More information about the MSU Dairy Challenge Program can be found at

<https://www.canr.msu.edu/dairychallenge/>

DAIRY ACADEMY RECAP

The MSU Dairy Academy was established to contact and recruit high school students interested in career opportunities in the dairy industry and show how MSU could help them achieve future goals. Participants in the two-day program learn about careers in the dairy industry and the educational opportunities at MSU. They meet current and former students and interact with MSU dairy faculty. They also learn about scholarships and all the extracurricular activities supported by MDMSF.

The first Dairy Academy was held in November 2023, and the second in March 2024. There have been approximately 100 applicants for both academies. The Academy is designed for 25 to 30 high school students and their parents to attend, so there have been 50 participants. The student and parent reviews of the academy have been outstanding and have resulted in 10 students enrolling in a dairy education program at MSU. There are approximately 30 participants who are still in high school and considering the opportunities at MSU. We have remained in contact with these potential future Spartans and continue to provide them with information and encourage them to come to MSU.

The third MSU Dairy Academy will be held November 15-16, 2024. The Michigan Dairy Memorial Scholarship Foundation's financial support is greatly appreciated.



MARK YOUR CALENDARS

February 28, 2025

Deadline for scholarship applications
(first-time and renewal applications for 4-year students)

For application or more information about MDMSF Scholarships, visit www.ans.msu.edu and click on the "students" link.

CELEBRATE DAIRY LEADERS WITH THE GIFT THAT KEEPS GIVING

One of the ways the Michigan Dairy Memorial and Scholarship Foundation (MDMSF) grows its endowment fund is by honoring individuals for their distinguished service to Michigan's dairy industry. More than 225 individuals have been named MDMSF Honorees since the foundation's establishment over 50 years ago.

A gift of \$1,000 or more to the MDMSF provides permanent recognition and honors a dairy leader for their service and contributions to the dairy industry. Foundation Honorees receive personal recognition from the foundation and their names are inscribed on a plaque in Anthony Hall at MSU. Honoree biographies and photographs are kept in permanent records in the MSU Department of Animal Science. In addition, photographs of MDMSF Honorees are displayed at the MSU Pavilion for Agriculture and Livestock Education.

The items needed for naming an MDMSF Honoree include: a \$1,000 contribution to the MDMSF, an 8x10 photo of the honoree and a one-page biography on the honoree. Many times the presentation to an MDMSF Honoree takes place at an industry or MDMSF event. At other times,

an individual is honored posthumously for their service to the industry through a presentation to the deceased honoree's family.

By honoring individuals through the MDMSF, donors are not only recognizing individuals for their accomplishments in the industry, but they are also investing and providing support to future dairy leaders. As the foundation endowment grows, additional scholarships can be awarded. With the increasing costs of higher education, scholarships often make the critical difference in the lives of students, enabling them to achieve their dreams for the future.

Naming someone as an MDMSF Honoree is a fitting tribute for recognizing someone who has served this great industry of ours. If you are interested in honoring someone through the MDMSF, contact:

- Any MDMSF board member
- Dr. Miriam Weber Nielsen at 517-432-5443 or mws@msu.edu
- CANR Development office at 517-355-0284

MAKE A CONTRIBUTION TO MDMSF

When the occasion suggests flowers, consider a living, growing tribute.



MICHIGAN DAIRY MEMORIAL AND SCHOLARSHIP FOUNDATION

Where the earnings provide scholarships to worthy students in dairy industry-related fields.

Make checks payable to: Michigan State University
Designate: Michigan Dairy Memorial and Scholarship
Foundation (A10901)

MAIL TO:
Dr. Miriam Weber Nielsen
Department of Animal Science
Michigan State University
2265 Anthony Hall, 474 S. Shaw Lane
East Lansing, MI 48824-1225



Michigan Dairy Memorial and Scholarship Foundation

Michigan State University
Anthony Hall, Room 2265
474 S Shaw Ln
East Lansing MI 48824

Non-Profit Org.
U.S. Postage
PAID
East Lansing, MI
Permit No. 21

Please make checks payable to Michigan State University, designate for MDMSF and forward with this completed form to:

Dr. Miriam Weber Nielsen
Michigan Dairy Memorial and Scholarship Foundation
Department of Animal Science, Michigan State University
Anthony Hall, Room 2265
474 S Shaw Ln
East Lansing MI 48824



Contributions to MDMSF (A10901)

Appeal Code 01034

Enclosed is my total contribution of \$ _____ or

Enclosed is my initial contribution of \$ _____

Please send me pledge reminders:

_____ annually _____ semi-annually _____ quarterly

Name: _____

Address: _____

Home Phone: _____ Email: _____

Please Send Me More Information on:

- A personal visit or other assistance
- MDMSF Honoree Recognition
- Joining MSU donor recognition clubs

